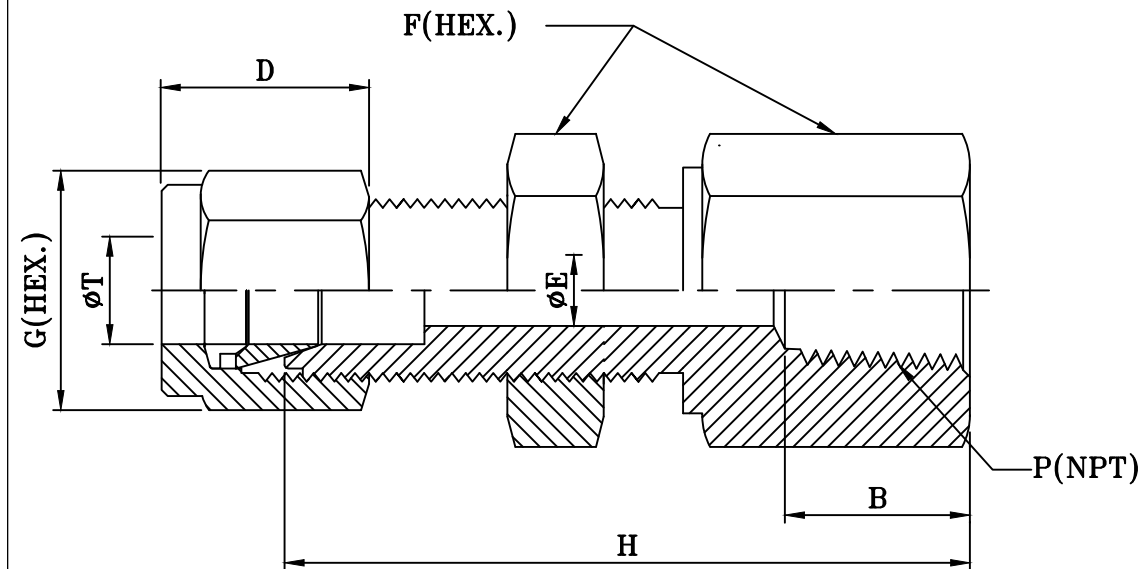


BULKHEAD FEMALE CONNECTOR



PART NO	P	T	F	F1	G	B	D	E	H
FBH2N2T	1/8"	1/8"	14.2	12.7	11.1	9.5	11.0	2.4	38.0
FBH2N4T	1/8"	1/4"	15.8	15.8	14.2	9.5	12.7	4.8	39.6
FBH4N4T	1/4"	1/4"	19.0	15.8	14.2	14.2	12.7	4.8	44.5
FBH4N6T	1/4"	3/8"	19.0	19.0	17.5	14.2	14.5	7.1	47.8
FBH6N6T	3/8"	3/8"	22.2	19.0	17.5	14.2	14.5	7.1	50.0
FBH6N8T	3/8"	1/2"	25.4	25.4	22.2	14.2	17.5	9.5	54.5
FBH8N8T	1/2"	1/2"	28.5	25.4	22.2	19.0	17.5	10.3	57.9

NOTES: 1) ALL DIMENSIONS ARE IN MM. UNLESS SPECIFIED. 2) PARTS TO BE FREE FROM BURR. 3) GENERAL TOLERANCE : ± 1MM. 4) REF. STD. : ASTM F1387 / ASME B1.20.1.						DATE	BY	CUSTOMER :			
						DRAWN	01.04.10	AL	TITLE : BULKHEAD FEMALE CONNECTOR		
						CHECKED			<div>Swastik Engg. Works</div> <div>GOREGAON (EAST), MUMBAI-400 063.</div>		
						APPROVAL					
	NO	DESCRIPTION	SIGN	DATE					MATERIAL : <div>DWG. NO : SEW-FBH-N</div> REV.:		
	REVISION				SCALE : NTS						